



Modal Analysis

Documentation



NVH CONSULTING AND ENGINEERING

End-User License Agreement (EULA) of Modal Analysis

Last Updated: 20/09/2020

This End-User License Agreement ("EULA") is a legal agreement between you and NVH CONSULTING AND ENGINEERING.

This EULA agreement governs your acquisition and use of our Modal Analysis software ("Software") directly from NVH CONSULTING AND ENGINEERING or indirectly through a NVH CONSULTING AND ENGINEERING authorized reseller or distributor (a "Reseller").

Please read this EULA agreement carefully before completing the installation process and using the Modal Analysis software. It provides a license to use the Modal Analysis software and contains warranty information and liability disclaimers.

If you register for a free trial of the Modal Analysis software, this EULA agreement will also govern that trial. By clicking "accept" or installing and/or using the Modal Analysis software, you are confirming your acceptance of the Software and agreeing to become bound by the terms of this EULA agreement.

If you are entering into this EULA agreement on behalf of a company or other legal entity, you represent that you have the authority to bind such entity and its affiliates to these terms and conditions. If you do not have such authority or if you do not agree with the terms and conditions of this EULA agreement, do not install or use the Software, and you must not accept this EULA agreement.

This EULA agreement shall apply only to the Software supplied by NVH CONSULTING AND ENGINEERING herewith regardless of whether other software is referred to or described herein. The terms also apply to any NVH CONSULTING AND ENGINEERING updates, supplements, Internet-based services, and support services for the Software, unless other terms accompany those items on delivery. If so, those terms apply.

License Grant

NVH CONSULTING AND ENGINEERING hereby grants you a personal, non-transferable, non-exclusive license to use the Modal Analysis software on your devices in accordance with the terms of this EULA agreement.

You are permitted to load the Modal Analysis software on a single Device (for example a PC, laptop, mobile or tablet) under your control and use the software on that Device strictly in accordance with the terms and conditions of this license. You are responsible for ensuring your device meets the minimum requirements of the Modal Analysis software.

You are not permitted to:

- Edit, alter, modify, adapt, translate or otherwise change the whole or any part of the Software nor permit the whole or any part of the Software to be combined with or become incorporated in any other software, nor decompile, disassemble or reverse engineer the Software or attempt to do any such things
- Reproduce, copy, distribute, resell or otherwise use the Software for any commercial purpose
- Install, use or permit the Software to exist on more than one Device or computer, i.e make the Software available over a network or other environment permitting access or use by multiple Devices or users. Any other copies you make of the Software shall constitute breach of this agreement.
- Allow any third party to use the Software on behalf of or for the benefit of any third party
- Use the Software in any way which breaches any applicable local, national or international law
- use the Software for any purpose that NVH CONSULTING AND ENGINEERING considers is a breach of this EULA agreement

Intellectual Property and Ownership

NVH CONSULTING AND ENGINEERING shall at all times retain ownership of the Software as originally downloaded by you and all subsequent downloads of the Software by you. The Software (and the copyright, and other intellectual property rights of whatever nature in the Software, including any modifications made thereto) are and shall remain the property of NVH CONSULTING AND ENGINEERING.

The structure, organization and code of the Software are the valuable trade secrets and confidential information of NVH CONSULTING AND ENGINEERING and/or its licensors

NVH CONSULTING AND ENGINEERING reserves the right to grant licenses to use the Software to third parties.

END USER DECLARATIONS.

AS THE END USER YOU ACKNOWLEDGE THAT THE SOFTWARE IS PROVIDED "AS IS", WITHOUT WARRANTY OF ANY KIND, EXPRESS OR IMPLIED, AND TO THE MAXIMUM EXTENT PERMITTED BY APPLICABLE LAW. THERE IS NO WARRANTY BY THE PROVIDER OR BY ANY OTHER PARTY THAT THE FUNCTIONS CONTAINED IN THE SOFTWARE WILL MEET YOUR REQUIREMENTS OR THAT THE OPERATION OF THE SOFTWARE WILL BE UNINTERRUPTED OR ERROR-FREE. YOU ASSUME ALL RESPONSIBILITY AND RISK FOR THE SELECTION OF THE SOFTWARE TO ACHIEVE YOUR INTENDED RESULTS AND FOR THE INSTALLATION, USE AND RESULTS OBTAINED FROM IT.

Termination

This EULA agreement is effective from the date you first use the Software and shall continue until terminated. You may terminate it at any time upon written notice to NVH CONSULTING AND ENGINEERING.

It will also terminate immediately if you fail to comply with any term of this EULA agreement. Upon such termination, the licenses granted by this EULA agreement will immediately terminate and you agree to stop all access and use of the Software. The provisions that by their nature continue and survive will survive any termination of this EULA agreement.

Governing Law

TO THE MAXIMUM EXTENT PERMITTED BY APPLICABLE LAW, IN NO EVENT SHALL THE PROVIDER, ITS EMPLOYEES OR LICENSORS BE LIABLE FOR ANY LOST PROFITS, REVENUE, SALES, DATA OR COSTS OF PROCUREMENT OF SUBSTITUTE GOODS OR SERVICES, PROPERTY DAMAGE, PERSONAL INJURY, INTERRUPTION OF BUSINESS, LOSS OF BUSINESS INFORMATION OR FOR ANY SPECIAL, DIRECT, INDIRECT, INCIDENTAL, ECONOMIC, COVER, PUNITIVE, SPECIAL OR CONSEQUENTIAL DAMAGES, HOWEVER CAUSED AND WHETHER ARISING UNDER CONTRACT, TORT, NEGLIGENCE OR OTHER THEORY OF LIABILITY, ARISING OUT OF THE USE OF OR INABILITY TO USE THE SOFTWARE, EVEN IF THE PROVIDER OR ITS LICENSORS OR AFFILIATES ARE ADVISED OF THE POSSIBILITY OF SUCH DAMAGES

This EULA agreement, and any dispute arising out of or in connection with this EULA agreement, shall be governed by and construed in accordance with the laws of Germany, Bavaria.

A word from the engineers

Thank you for purchasing our software. This software was designed by engineers for engineers and portability and simplicity were the key features in our development strategy, so it can run on any type of hardware (low- or high-end machines).

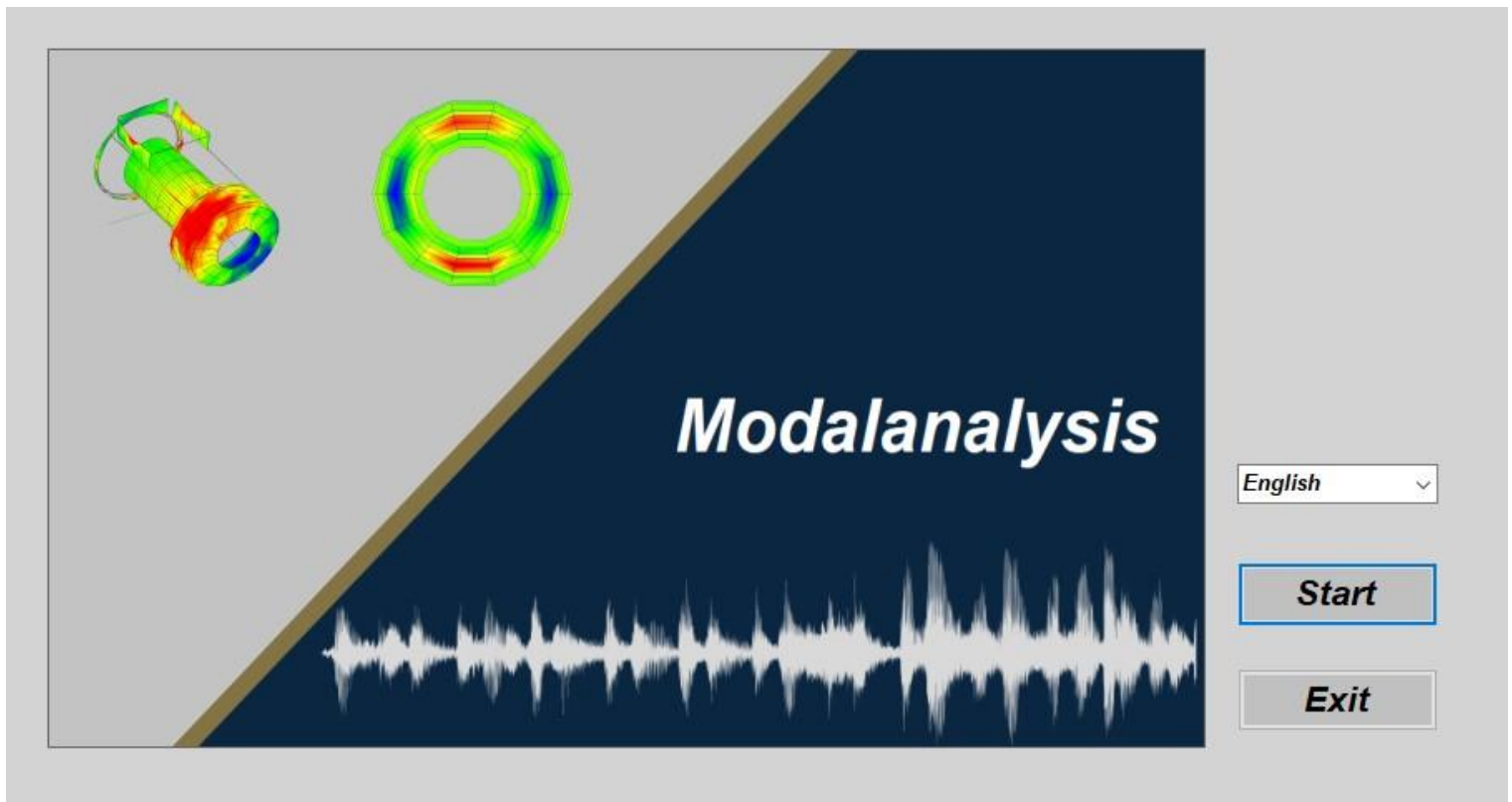
This software will help you with all your modal analysis needs whether the data is captured live using one of our partners tools or prerecorded data.

For any information do not hesitate to contact us we will be glad to help you.

E-mail: info@sibaei-engineering.de

Website: www.sibaei-engineering.de

Welcome Screen



This is the first screen you see when the software is launched.

Here can be chosen:

- The language for the software
- **START**: Start the software
- **EXIT**: Quit the software

Project creation

Combine Geometry Data with FRF Data to a Project

Geometry Data	FRF Data	Project
MOTOR	MOTOR	ENGINE

>>

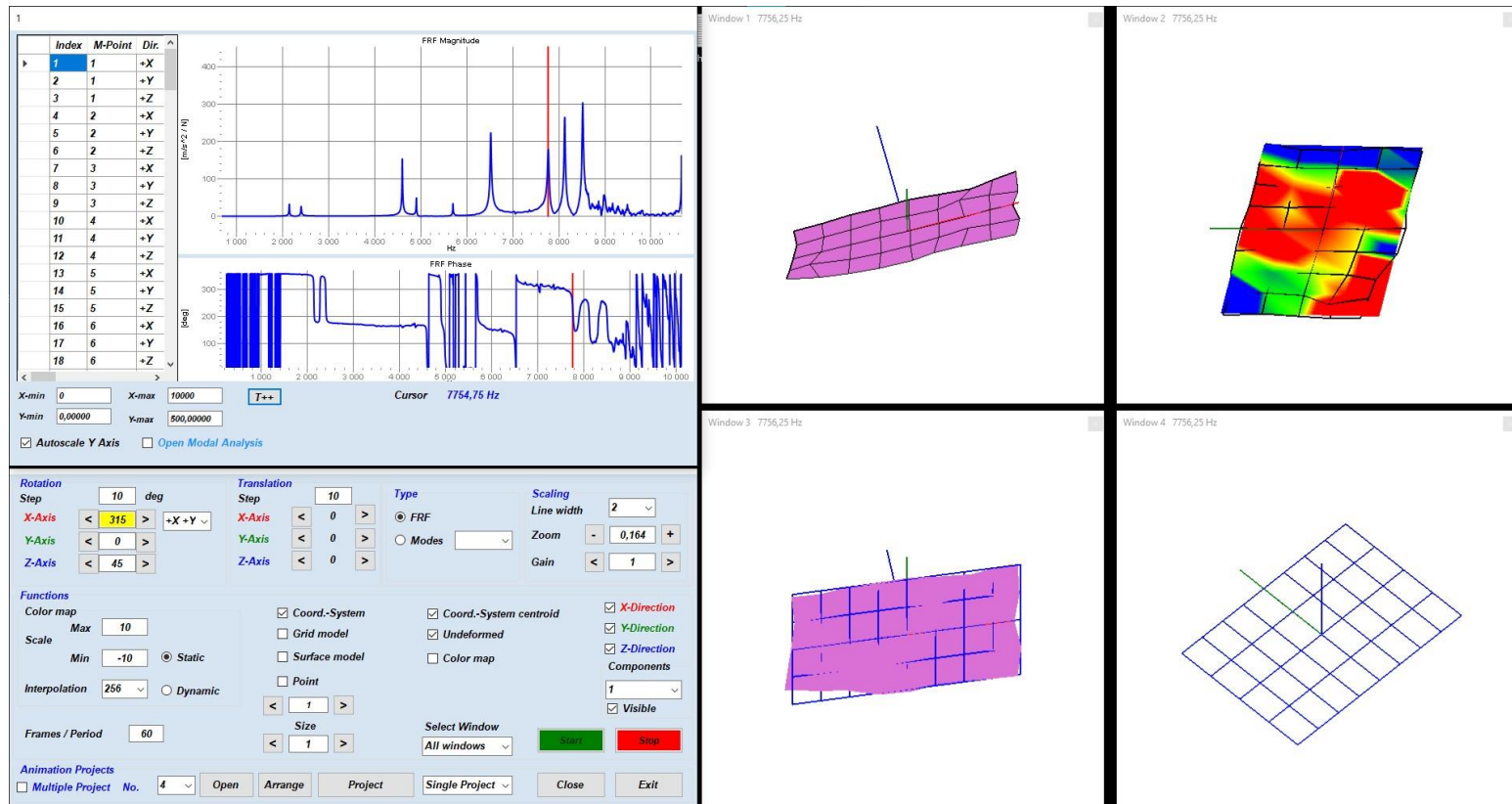
Geometry
FRF

FRF-Meas. Geometry Apply to window Import UFF Save as Project Load Project Return

After launching the software, you will be presented with this screen to create your own project here you need to choose the geometry data and the FRF data to be combined into to one project.

- **GEOMETRY DATA:** Select the geometry file data to be combined with the FRF-Data into a project file
- **FRF-DATA:** Select the FRF-Data file to be combined with the geometry file into a project file
- **FRF-MEAS.:** Load the FRF Measurement file
- **GEOMETRY:** Create the geometry data points (grid and surface model)
- **APPLY TO WINDOW:** Apply current settings to window
- **IMPORT UFF:** Import Universal File Format project
- **SAVE AS PROJECT:** Combines the selected geometry and FRF data files into a project and saves them
- **LOAD PROJECT:** Load a previously saved project
- **RETURN:** Go back to previous screen

Main window



This is the main window of the software, using this view you can analyze and visualize the data acquired. The data is displayed in a 3-axis environment (X, Y, Z).

The user can rotate the animation using his mouse (left click) and using the right click will change the axis of rotation (X, Y, Z).

Main panel

The screenshot shows the 'Main panel' interface with the following sections:

- Rotation:** Step: 1 deg. X-Axis: 315, Y-Axis: 0, Z-Axis: 45. Direction: +X +Y.
- Translation:** Step: 10. X-Axis: 0, Y-Axis: 0, Z-Axis: 0.
- Type:** FRF (selected), Modes (dropdown).
- Scaling:** Line width: 2, Zoom: 0,135, Gain: 1.
- Functions:**
 - Color map: Max 10, Min -10, Interpolation 16.
 - Scale: Static (selected), Dynamic (unselected).
 - Frames / Period: 30.
 - Size: 1.
 - Select Window: All windows.
 - Start (green button), Stop (red button).
 - Visible (checked).
- Animation Projects:** Multiple Project No. 4, Open, Arrange (highlighted), Project, Single Project, Close, Exit.

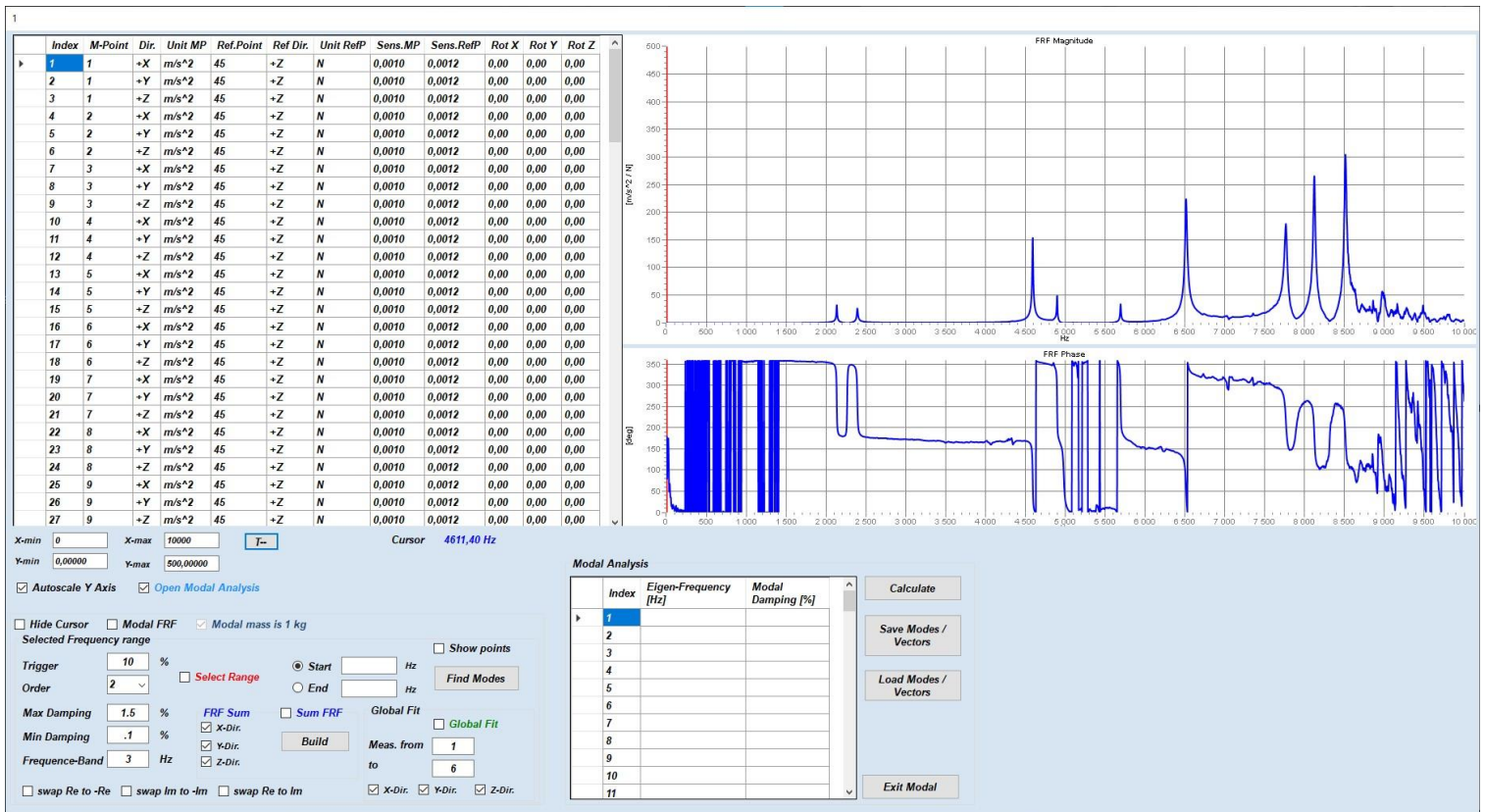
The main panel is used to configure how the data is shown. The user can rotate on all three axes the animation, choose parts of the animated object, customize the scale for the color map and zoom in and out. All the above-mentioned options can be applied to all the window animations or individually by using the select window **drop down menu**.

You can customize the animation in several ways using the check boxes provided in the middle of the panel:

- **GRID MODEL:** Show / hide grid model
- **SURFACE MODEL:** Show / hide surface model (you can choose the color that suites your project)
- **UNDEFORMED:** Show / hide an undeformed model
- **COLOR MAP:** Show / hide color map for the model

- **START:** Start the animation
- **STOP:** Stop the animation
- **OPEN:** Choose how many animation windows to open (default is 4)
- **ARRANGE:** Arrange all windows to the default locations
- **PROJECT:** Load previously saved project
- **CLOSE:** Close all animation windows
- **EXIT:** Quit the software

Modal Window



Modal calculation system used to calculate Eigen-Freq & modal damping & the modal vectors

To find the modes you have to:

1. Select the frequency range to calculate the modes by using the cursor to choose the start and end point (**Select Range** check box)
2. Click on start radio button and with the mouse choose the starting point on the displayed graph (left click with the mouse)
3. Click on end radio button and with the mouse choose the end point on the displayed graph (left click with the mouse)
4. Click the Find Modes button
5. The results will appear in the table
6. To display the mathematical model (Synthetical FRF) select the **Modal FRF** check box

To fine tune the results the user can choose the Maximum and Minimum Damping range in order to filter unwanted mathematical Modes.

In order to calculate Global Modes, the user must check the **Global Fit** check box and define the measurement range (start and finish points), the user can also define the axis (X, Y, Z).